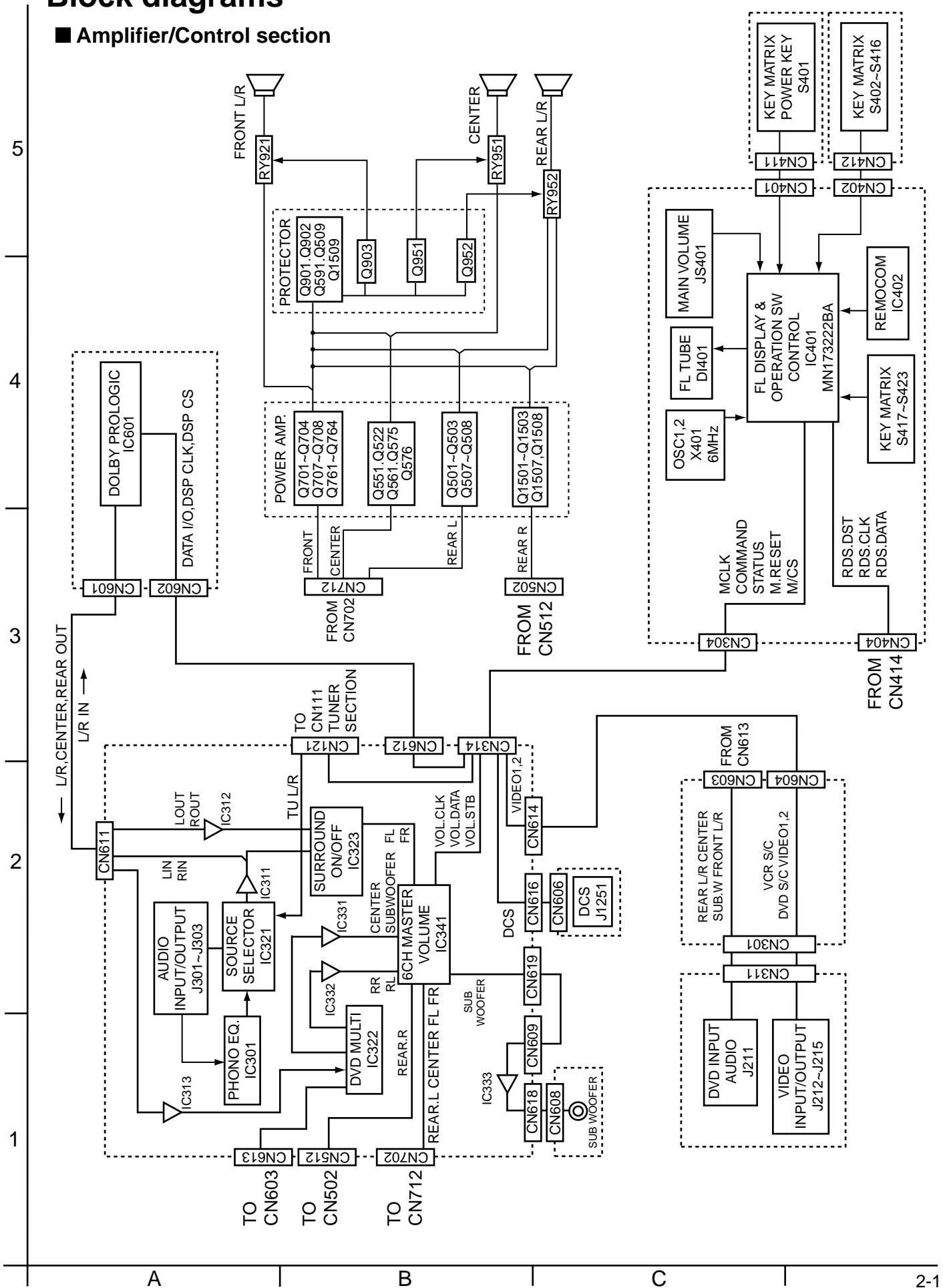
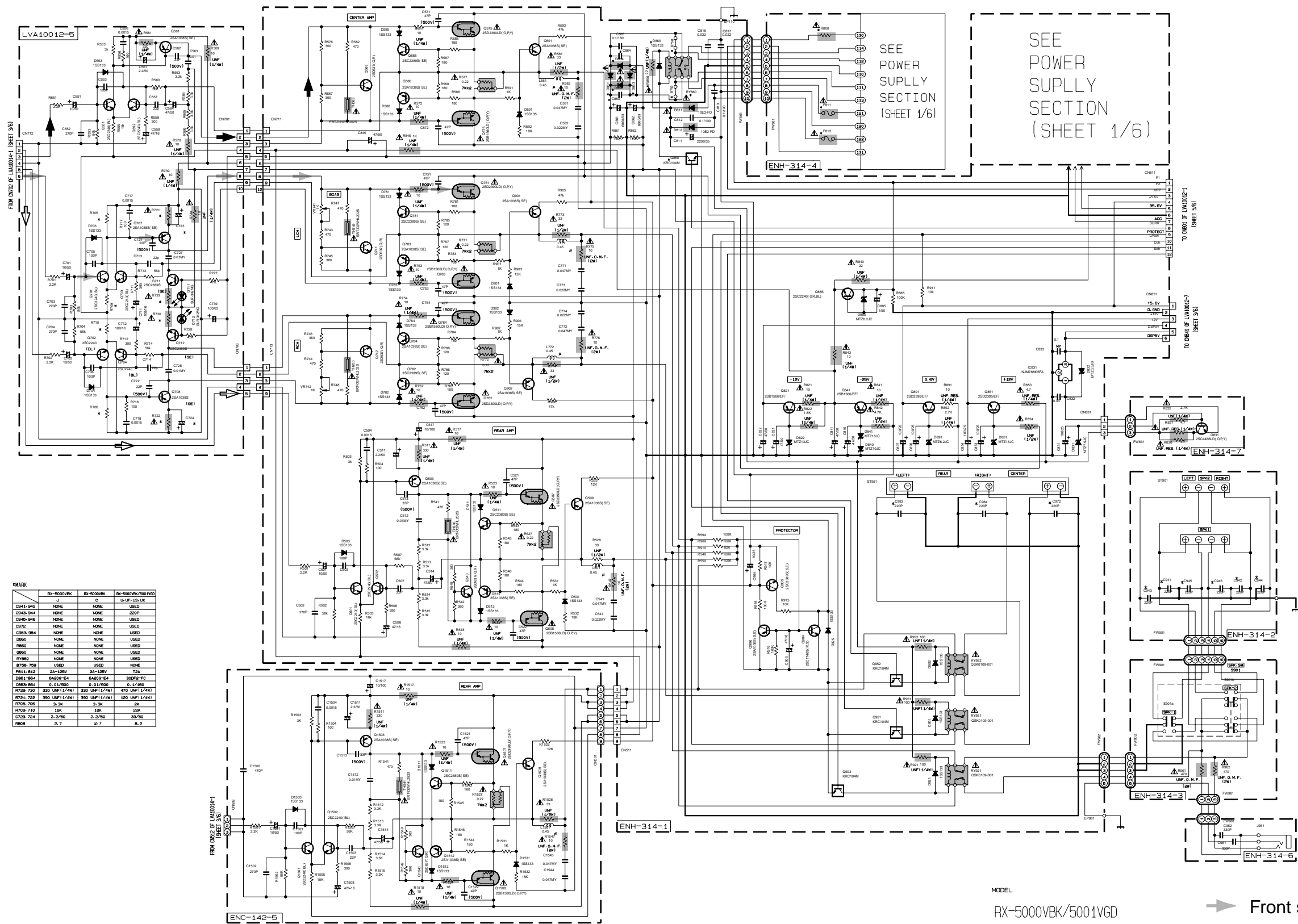


Block diagrams

■ Amplifier/Control section



Audio AMP / Power primary section



*MARK

	RX-5000VBK	RX-5000VGD	RX-5000VBK/5001VGD
C843-844	NONE	NONE	USED
C845-846	NONE	NONE	USED
C872	NONE	NONE	USED
C883-884	NONE	NONE	USED
D880	NONE	NONE	USED
D880	NONE	NONE	USED
D880	NONE	NONE	USED
D880	NONE	NONE	USED
R705-706	USED	USED	NONE
R711-712	2K-150V	2K-150V	2K
D811-814	6A200-E4	6A200-E4	300P-F-C
C883-884	0.01/500	0.01/500	0.1/150
R705-706	330 UNF (1/4W)	330 UNF (1/4W)	470 UNF (1/4W)
R721-722	390 UNF (1/4W)	390 UNF (1/4W)	180 UNF (1/4W)
R705-706	3.3K	3.3K	2K
R707-710	18K	18K	20K
C723-724	2.2/50	2.2/50	33/50
R808	2.7	2.7	8.2

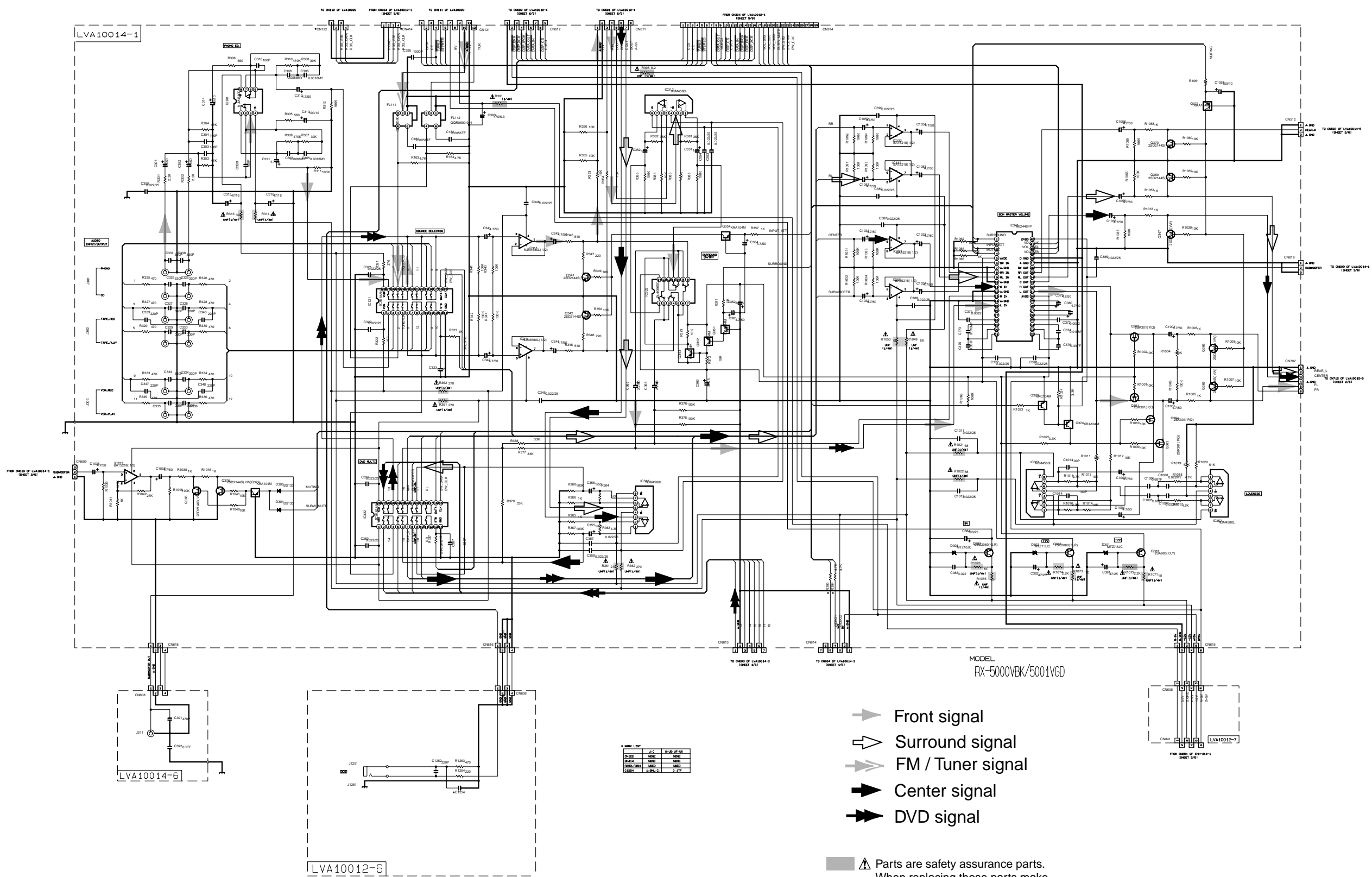
MODEL
RX-5000VBK/5001VGD

▲ Parts are safety assurance parts. When replacing those parts make sure to use the specified.

- ➔ Front signal
- ➞ Surround Signal
- ➡ Center signal

■ Audio IN / OUT & Source selector section

5
4
3
2
1



- ➔ Front signal
- ➔ Surround signal
- ➔ FM / Tuner signal
- ➔ Center signal
- ➔ DVD signal

⚠ Parts are safety assurance parts. When replacing those parts make sure to use the specified one.

◆ MARK LIST

MARK	QTY	UNIT	REMARK
C101	NONE	NONE	
C102	NONE	NONE	
C103	NONE	NONE	
C104	1	PC	3.3K

Video signal input / output section

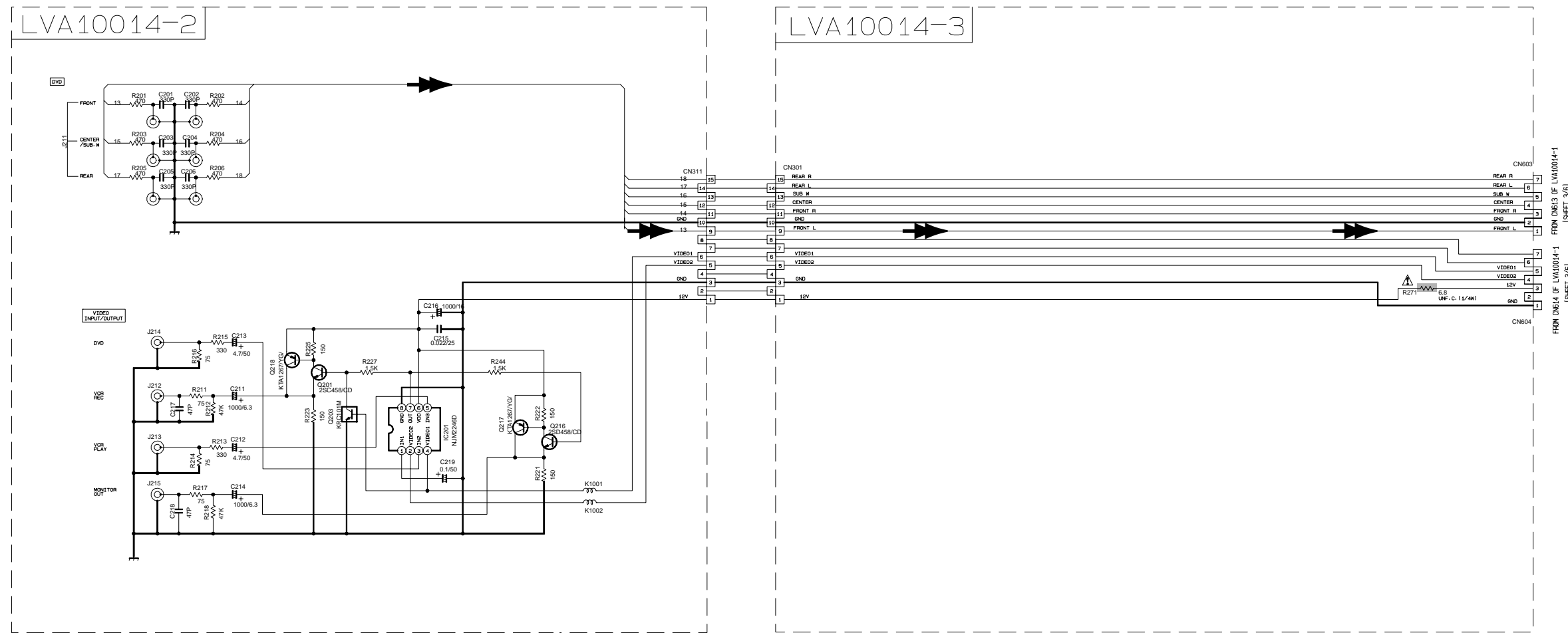
5

4

3

2

1



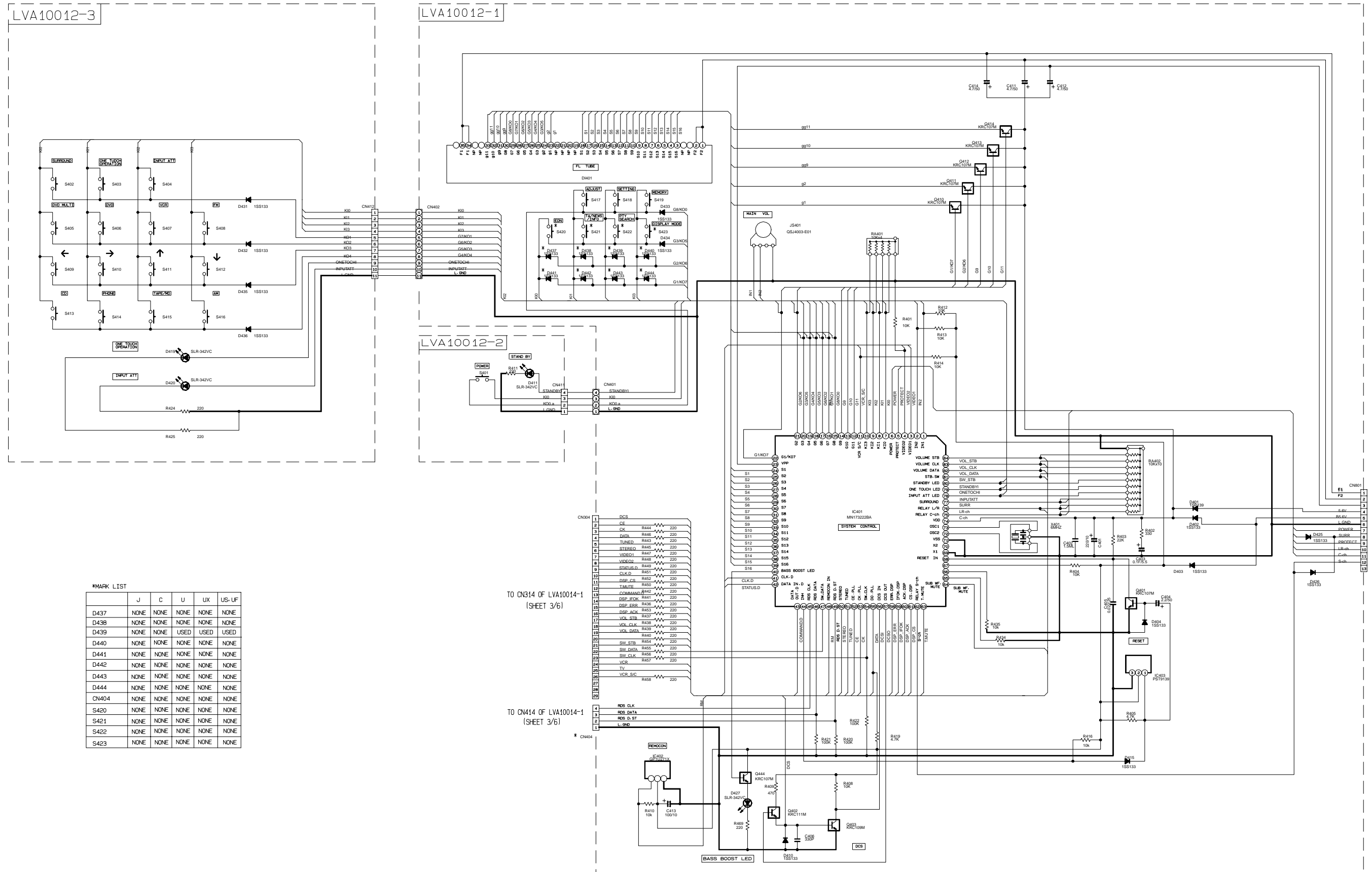
➡➡ DVD signal

MODEL
RX-5000VBK/5001VGD

⚠ Parts are safety assurance parts.
When replacing those parts make
sure to use the specified.

System control & operation switch section

5
4
3
2
1



*MARK LIST

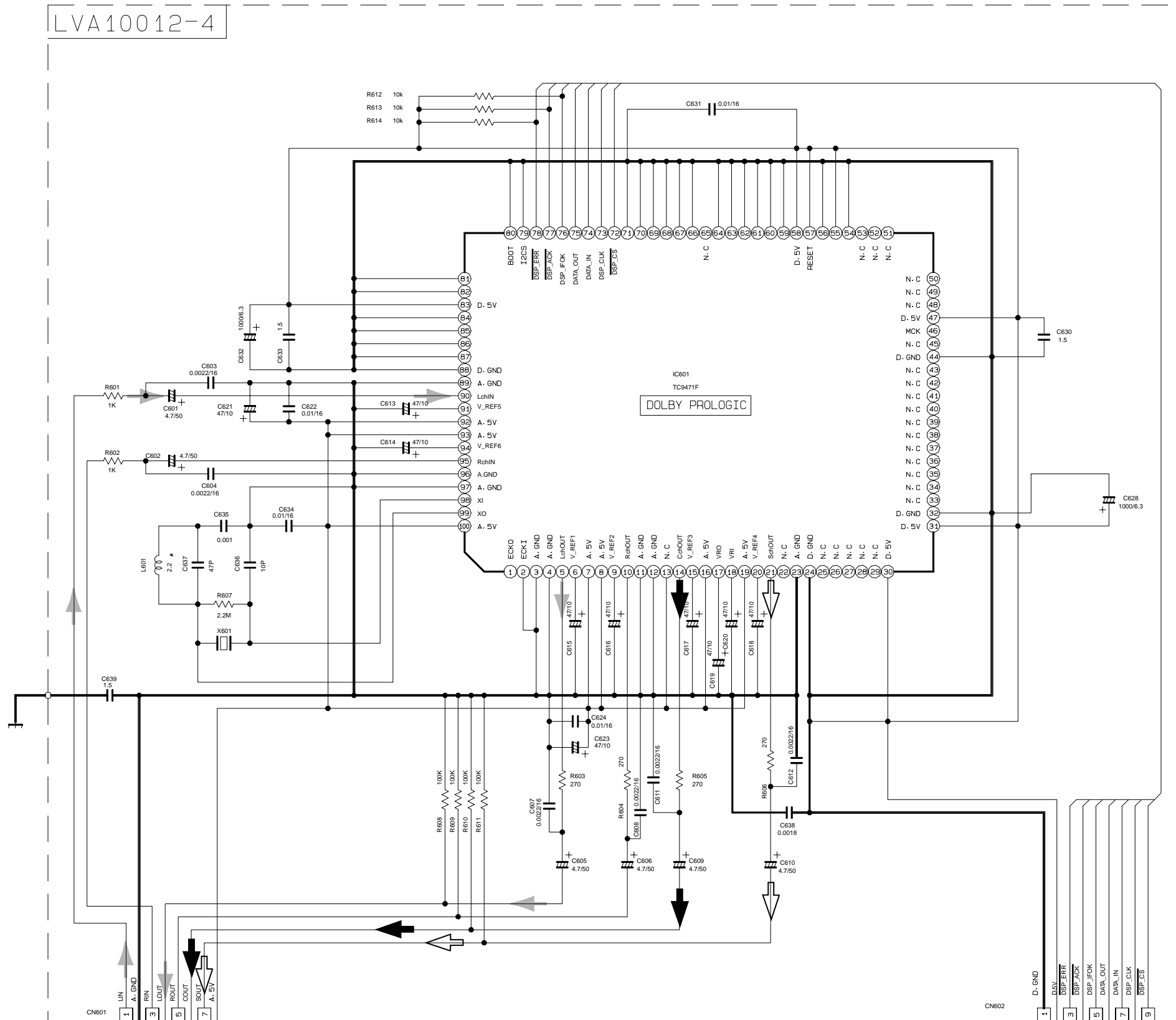
	J	C	U	LUX	US-UF
D437	NONE	NONE	NONE	NONE	NONE
D438	NONE	NONE	NONE	NONE	NONE
D439	NONE	NONE	USED	USED	USED
D440	NONE	NONE	NONE	NONE	NONE
D441	NONE	NONE	NONE	NONE	NONE
D442	NONE	NONE	NONE	NONE	NONE
D443	NONE	NONE	NONE	NONE	NONE
D444	NONE	NONE	NONE	NONE	NONE
CN404	NONE	NONE	NONE	NONE	NONE
S420	NONE	NONE	NONE	NONE	NONE
S421	NONE	NONE	NONE	NONE	NONE
S422	NONE	NONE	NONE	NONE	NONE
S423	NONE	NONE	NONE	NONE	NONE

TO CN314 OF LVA10014-1 (SHEET 3/6)

TO CN414 OF LVA10014-1 (SHEET 3/6)

FROM CN11 OF EN314-1 (SHEET 2/6)

■ DSP Control section



MODEL
RX-5000VBK/5001VGD

- Front signal
- Surround Signal
- Center signal

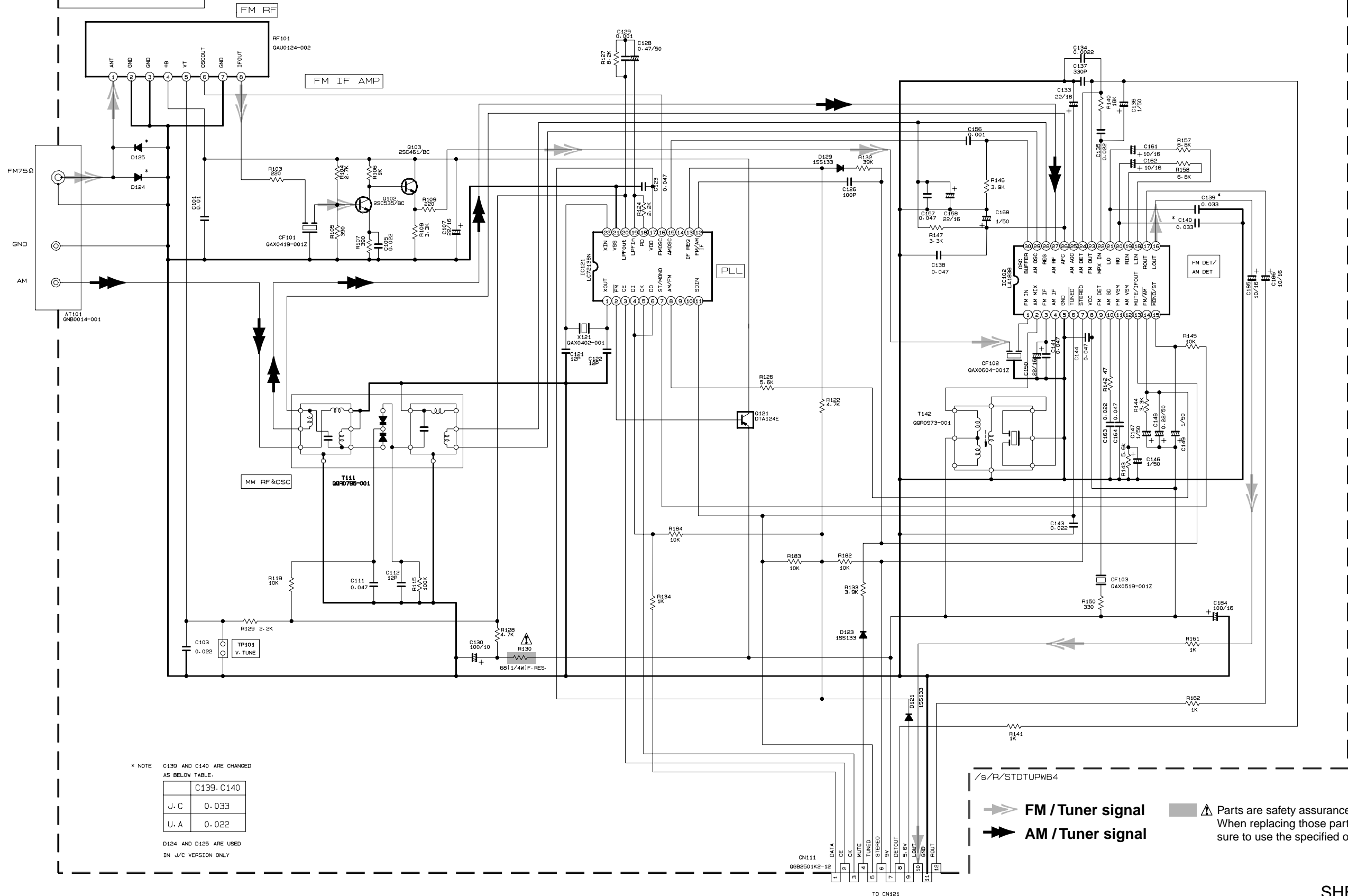
FROM CN612 OF LVA10014-1
(SHEET 3/6)

FROM CN611 OF LVA10014-1
(SHEET 3/6)

■ Tuner section

FOR J, C, U, A
LVA10009

5
4
3
2
1



* NOTE C139 AND C140 ARE CHANGED AS BELOW TABLE.

	C139, C140
J, C	0.033
U, A	0.022

D124 AND D125 ARE USED IN J/C VERSION ONLY

/s/R/STDUPWB4

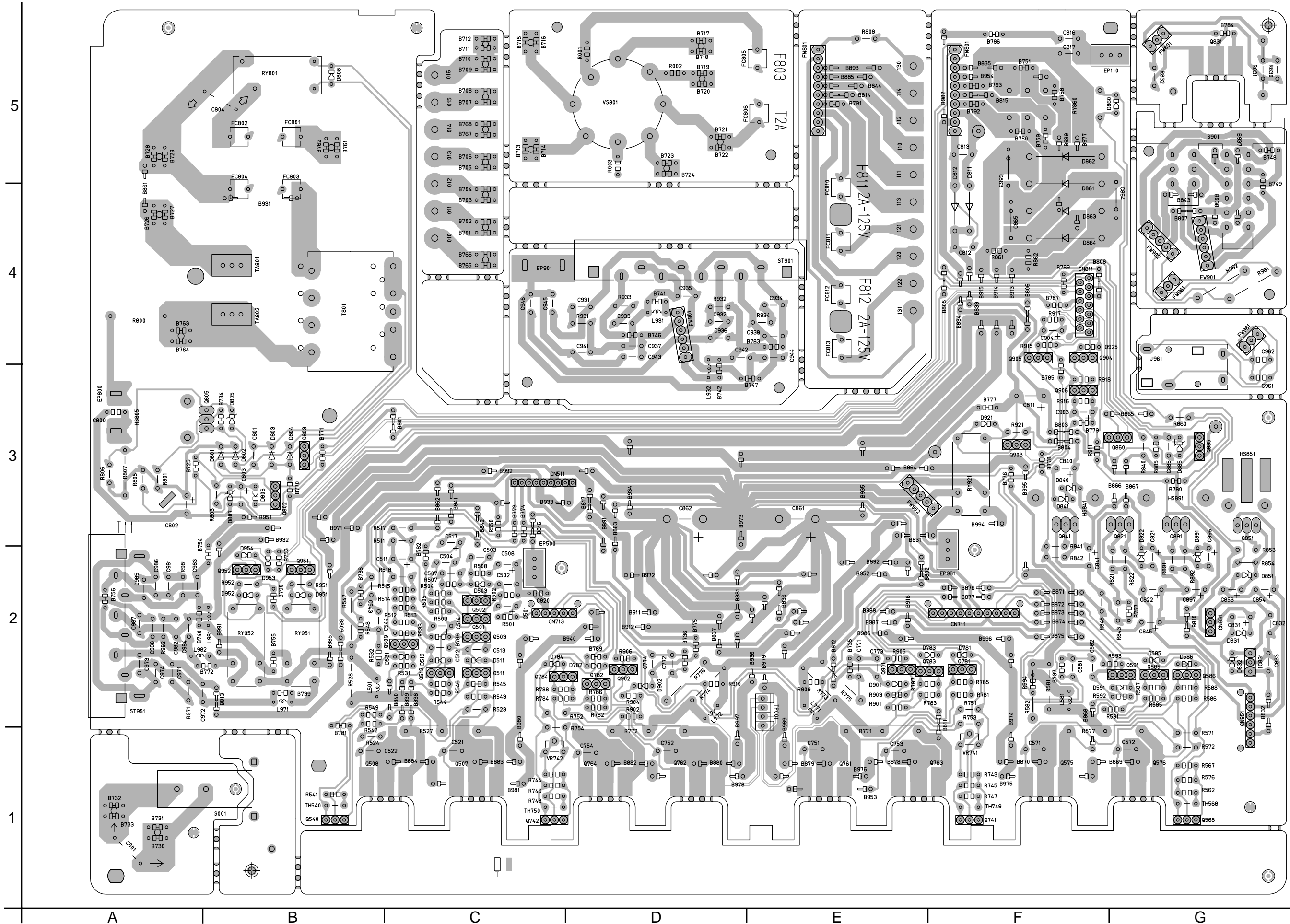
FM / Tuner signal

AM / Tuner signal

Parts are safety assurance parts. When replacing those parts make sure to use the specified one.

SHEET END

Power supply & Main board



■ AV Input/output bard

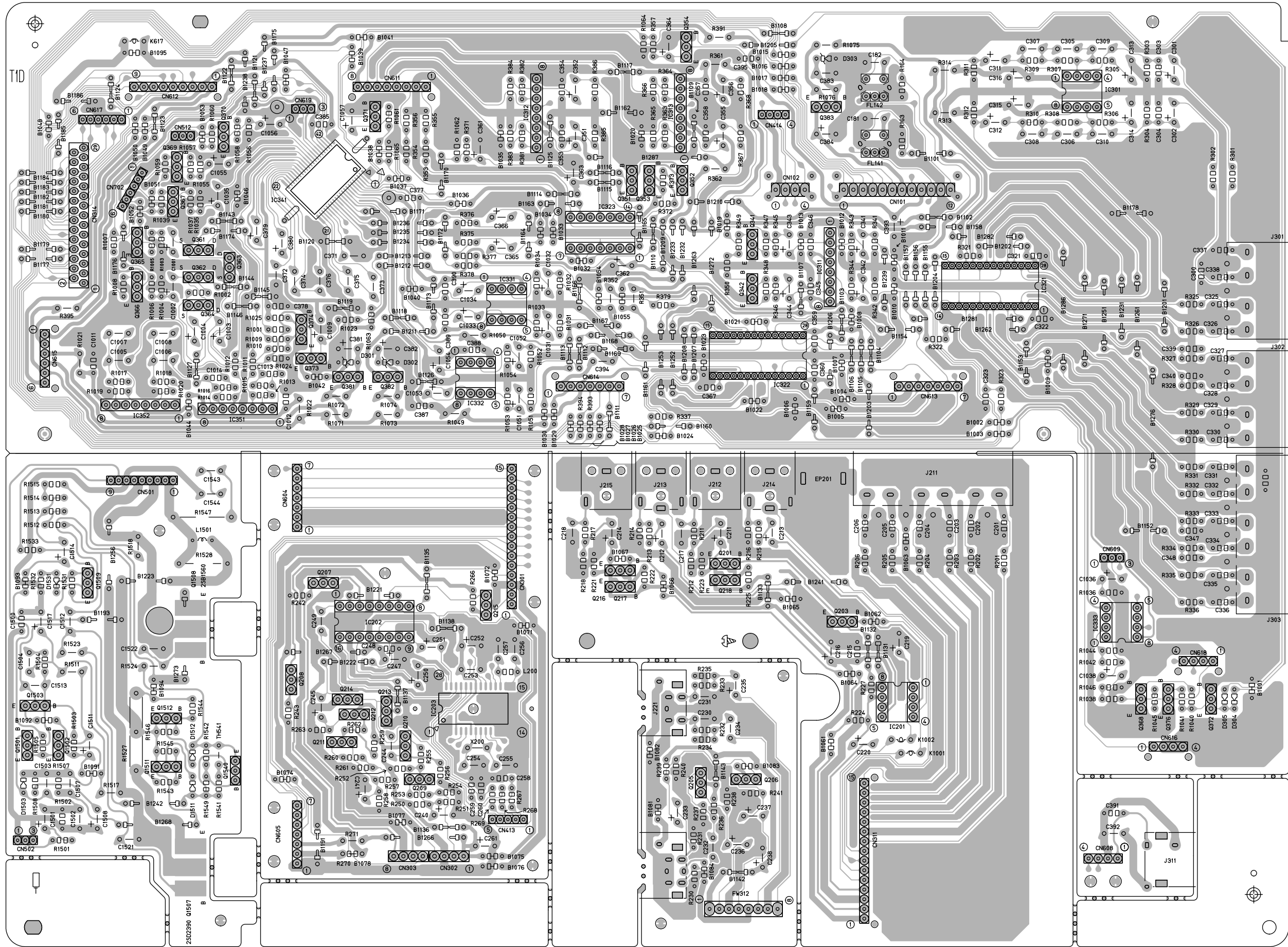
5

4

3

2

1



-MEMO-